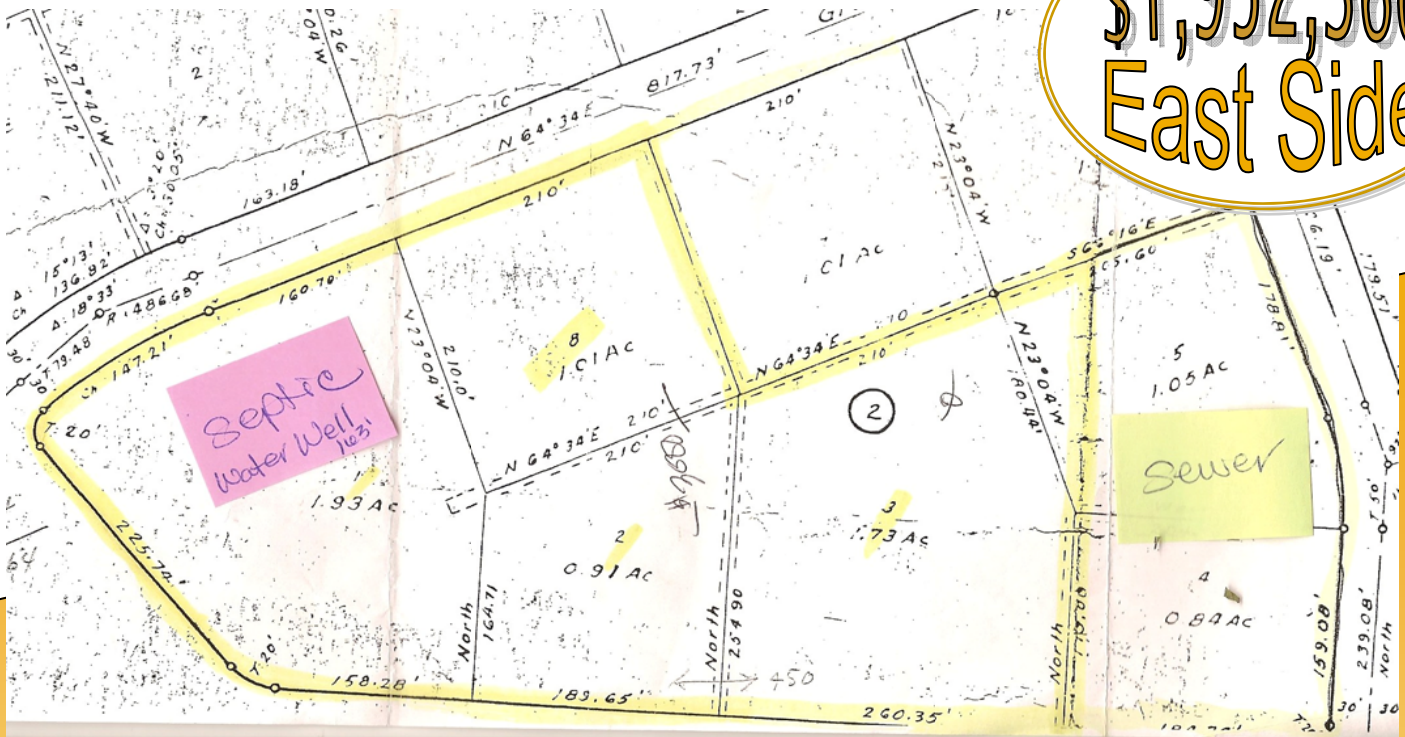




14141 Gateway West

\$1,952,360
East Side



Located next to the El Paso Connection, just west of the Horizon Boulevard exit off I-10 West. Water and sewer are available within 100 feet of lots 1, 2, 3 & 8. Lots 4 & 5 have a sewer connection line but no water service. Lots 1 & 2 have septic tanks. Lot 1 has a water well +/-160 feet .

For more information on Texas Real Estate go to www.TexasRealtor.com/AskATexasRealtor

Jennifer Stroh
(915) 588-2338
www.jstroh.com

